

**12**  
VOLT

# GATE OPERATOR MASTER<sub>12Q</sub>

For gates up to 1200 Kg

## 500MASTER12Q

12 V sliding gate operator with encoder, complete with electronic control unit. Maximum gate weight 1200 kg.

### Features:

- apartment building / commercial use
- for gates up to 1200 kg
- low voltage DC gate operator
- optical encoder technology
- built-in battery charger

### Pros:

- obstacle detection and crush prevention
- in accordance with EN 12445-12453 standards\*
- works even during power outage thanks to the optional backup battery
- fast operating speed
- intensive use, ideal for use on apartment buildings and public entrances
- external emergency release available (optional, P/N 650ESE02)



#### Protected control board:

The electronic control unit is well protected from the outside within its plastic shell



#### Practical:

The manual release is easy, intuitive and protected by a personal key.



### Technical features

### MASTER12Q

Technical features	MASTER12Q
Power supply	230 V AC (50 - 60 Hz)
Motor power supply	18 V DC
Motor Absorption	2,6 A
Absorbed power	300 W
Max. operating speed	11 m/min
Duty cycle	100 %
Max. thrust	1350 N
Operating temperature	-20° C ÷ +55° C
Motor thermal protection	-
Degree of protection	IP 44
Max. gate leaf weight	1200 kg
Pinion module	Module 4



The above represented installation does not include safety devices such as safety edges. Their addition depends upon the risk assessment made on any installation in accordance with EN 12445-12453 standards.

## Accessories



550CPM  
Counterplate



200BATT  
12 V back-up battery, 7,2 Ah



550CPMR  
Adjustable counterplate



650ESE02  
External emergency release  
device with tamper-proof  
housing and 4 m cable



900KITCF15  
Safety edge kit l=1,5 m.



S-500K123M00  
Replacement electronic  
control unit



900KITCF  
Safety edge kit l=2 m.



400CFZ12  
Steel rack 30x12, complete  
with screws (Module 4, max  
2000 kg)



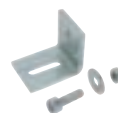
900TWC  
Wireless safety edge  
transmitter



400CFZ22  
Steel rack 22x22 (Module 4,  
max 3000 kg)



900TWM  
Wireless safety edge  
master receiver



400VSF20  
Screws and brackets for  
400CFZ22 (40 units per  
pkg)



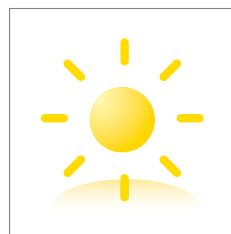
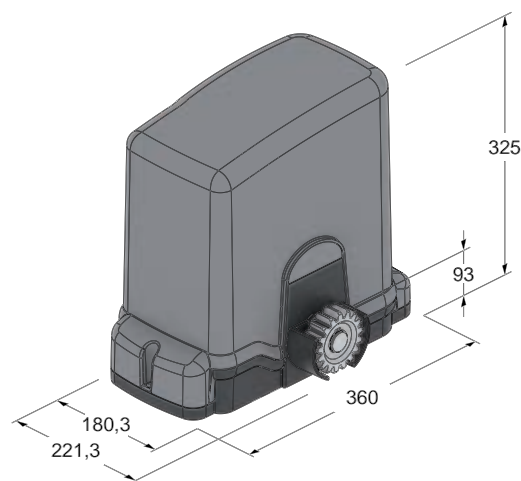
C-CRT  
Warning signal



C-TARG  
Aluminium CE mark label,  
self adhesive



250RXDC1  
Self-learning, single-channel,  
433,92 MHz plug-in radio  
receiver. Accepts up to 62  
rolling code transmitters  
or unlimited dipswitch  
transmitters



**Solar power**  
Thanks to the  
Photovoltaic (PV)  
Technology, every  
low voltage DC gate  
operator can be solar  
powered. Discover the  
advantages of the solar  
energy at page 124



**Further accessories:**  
Transmitters page 104  
Photocells page 110  
Flashing lights page 113

# GATE OPERATOR MASTER<sub>20</sub>

For gates up to 2000 Kg

## 500MASTER20QR

230 V sliding gate operator with encoder and limit switch, complete with electronic control unit and built-in 433,92 MHz radio receiver. Maximum gate weight 2000 kg.

## 500MASTER20QM

230 V sliding gate operator with encoder and magnetic limit switches, complete with electronic control unit and built-in 433,92 MHz radio receiver. Maximum gate weight 2000 kg.

## 500MASTER20T

400 V three-phase sliding gate operator without electronic control unit. Maximum gate weight 2000 kg

### Features:

- commercial use
- for gates up to 2000 kg
- 230 V (MASTER20QR/QM) and 400 V (MASTER20T) gate operators
- optical encoder technology for obstacle detection (MASTER20QR/QM only)
- electronic brake
- irreversible gate operator
- lever manual release mechanism

### Pros:

- obstacle detection and crush prevention (MASTER20QR/QM only)
- suitable for large sliding gates
- high torque and power thanks to the three-phase 400 Vac version (MASTER20T)
- external emergency release available (optional, P/N 650ESE02)



#### Protected control board:

The electronic control unit is well protected from the outside within its plastic shell



#### Practical:

The manual release is easy, intuitive and protected by a personal key.



Technical features	MASTER20QR/QM	MASTER20T
Power supply	230 V AC (50 - 60 Hz)	400 V AC (50 - 60 Hz)
Motor power supply	230 V AC	400 V AC
Motor Absorption	3,4 A	3,7 A
Absorbed power	550 W	1000 W
Speed maneuver	10,5 m/min	10,5 m/min
Duty cycle	40 %	58 %
Max. thrust	1890 N	1890 N
Operating temperature	-20° C ÷ +55° C	-20° C ÷ +55° C
Motor thermal protection	160° C	150° C
Degree of protection	IP 44	IP 44
Max. gate leaf weight	2000 kg	2000 kg
Pinion module	Module 4	Module 4



The above represented installation does not include safety devices such as safety edges. Their addition depends upon the risk assessment made on any installation in accordance with EN 12445-12453 standards.

### Accessories



**550CPM**  
Counterplate



**550CPMR**  
Adjustable counterplate



**900KITCF15**  
Safety edge kit l=1,5 m.



**900KITCF**  
Safety edge kit l=2 m.



**900TWM**  
Wireless safety edge master receiver



**900TWC**  
Wireless safety edge transmitter



**250RXDC1**  
Self-learning, single-channel, 433,92 MHz plug-in radio receiver. Accepts up to 62 rolling code transmitters or unlimited dipswitch transmitters.



**C-CRT**  
Warning signal



**650ESE02**  
External emergency release device with tamper-proof housing and 4 m cable



**S-500D705M00**  
Replacement electronic control unit (MASTER20QR)



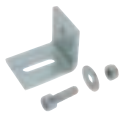
**600D703M**  
230/400 V electronic control unit for one gate operator with electrical brake (MASTER20T)



**400CFZ12**  
Steel rack 30x12, complete with screws (Module 4, max 2000 kg)



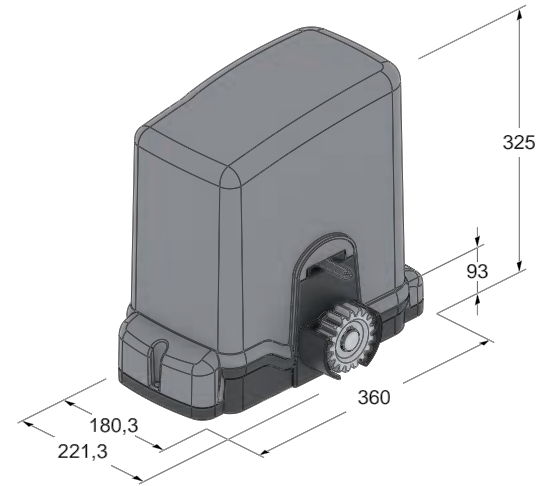
**400CFZ22**  
Steel rack 22x22 (Module 4, max 3000 kg)



**400VSF20**  
Screws and brackets for 400CFZ22 (40 units per pkg)



**C-TARG**  
Aluminium CE mark label, self adhesive



**Further accessories:**  
Transmitters page 104  
Photocells page 110  
Flashing lights page 113