

## RESIDENTIAL CONDOMINIUM

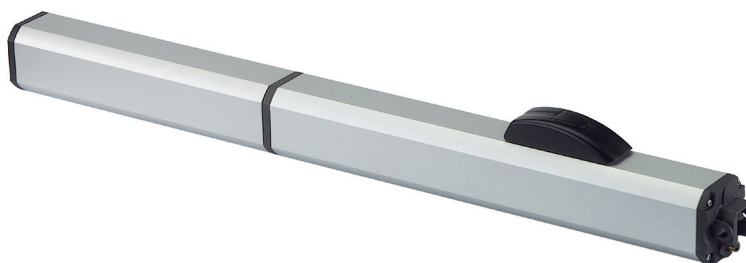
# Hydraulic Swing Gate Operator

maximum leaf width

12-20 ft

maximum leaf weight

900-2000 lb



- Wide and versatile range from residential to heavy industrial gates
- Hydraulic lock of the gate in open and/or closed positions
- Quiet operation
- Self lubricating for long life
- Key protected manual release
- Compliant with UL325 for Class I,II,III, and IV applications

### TECHNICAL SPECIFICATIONS

Model	400 CBC	400 CBAC	400 SB	400 SBS	400 CBACR	400 CBAC EG	400 SB EG
Input voltage	115 VAC (+10% -6%) or 230 VAC (+6% -10%)						
Power	220 W						
Current	2A (115V) - 1 A (230V)						
Motor	Asynchronous single phase						
Thrust capacitor	25uF (115V) - 8uF (230V)						
Operating ambient temperature	4°F - 131°F (-20 °C to +55 °C)						
Thermal protection on motor	248 °F (120 °C)						
Weight	19 lb (8.6 kg)			22 lb (10 kg)			
Protection class	IP 55						
Dimensions (L x D x H)	40.5 x 4.4 x 3.3 in (1,031x113x85 mm)					50.6 x 4.4 x 3.3 in (1,285x113x85 mm)	
Hydraulic Locking (1) = Closing (2) = Opening and Closing	(1)	(2)	None	None	(2)	(2)	None
Minimum Leaf Length	9.5 ft (2.9m)	9.5 ft (2.9m)	9.5 ft (2.9m)	12.5 ft (3.8m)	9.5 ft (2.9m)	11.5 ft (3.5m)	11.5 ft (3.5m)
Maximum Leaf Length	16 ft (4.9 m)	16 ft (4.9 m)	18 ft (5.5 m)	20 ft (6.1 m)	12 ft (3.6 m)	18 ft (5.5 m)	20 ft (6.1 m)
Maximum Leaf Weight	1300 lb (589 Kg)	1300 lb (589 Kg)	1600 lb (726 Kg)	2000 lb (907 Kg)	900 lb (408 Kg)	1500 lb (680 Kg)	1800 lb (816 Kg)
Thrust force	1390 lbf (620 daN)	1390 lbf (620 daN)	1390 lbf (620 daN)	1740 lbf (775 daN)	1045 lbf (465 daN)	1045 lbf (465 daN)	1045 lbf (465 daN)
Pump flow rate	1 l/m	1 l/m	1 l/m	0.75 l/m	1.5 l/m	1.5 l/m	1.5 l/m
90° opening time	approx. 18 sec	approx. 18 sec	approx. 18 sec	approx. 24 sec	approx. 12 sec	approx. 18 sec	approx. 18 sec
Effective rod stroke	10.25 in (260mm)	10.25 in (260mm)	10.25 in (260mm)	10.25 in (260mm)	10.25 in (260mm)	15 in (380mm)	15 in (380mm)
Use Frequency (cycles per hour)	70	70	70	60	80	50	50

### NOTE

- Mounting dimensions, wind factor and gate design will affect performance specification
- Use frequency is measured at an ambient temperature of 72 °F (20 °C) . Temperature variation will affect it
- An electric or magnetic lock is recommended for any gate longer than 12 ft (3.6 m)
- Positive gate stops, which limit gate travel, are required in the opened and closed positions